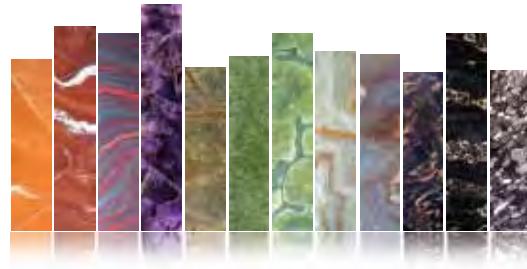




MARMONIL



“We aspire to be a company
that our clients are proud to work with,
and our employees are proud to work for”

Table of Contents

About Us



1

Group



4

CSR



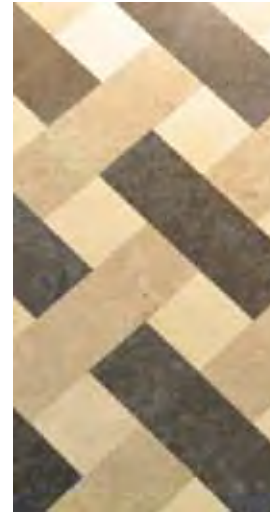
5

Projects



7

Egyptian
Stones



17

Finishes



25

Patterns



27

Quarries



29

Production



31

Quality Control



45

at a glance ...

2.5 million square meters of production capacity per year

170,000 m² of production facility property

1000 people employed in our workforce

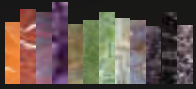
250+ materials in our stone portfolio

100+ projects successfully completed in

50 quarries licensed

6 continents covered

70 countries



Since our founding in 1963, we have evolved from a family business operating in marble and granite to Egypt's largest vertically integrated stone producer. Our operations in Egypt cover all aspects from quarrying, cutting, processing and finishing to packing and distribution of finished stones.

Our clients benefit from our 48-year track record, which attest to our experience and commitment in delivering quality stones matching global standards.







MARMONIL

We specialize in the mass production of slabs, tiles and cut-to-size, and aspire to be the supplier of choice for large complex projects.

Our annual production capacity exceeds 2.5 million square meters, stemming from our exceptionally strong resources of 50 licensed quarries, 170,000 m² of production facilities and 250+ stones in our portfolio. Working together with our 1,000 employees, we have built up a solid international reputation resulting from our expertise, experience, and continuing investment in machinery and technology. Using our strong network, our talented team is dedicated to work not just to improve the quality of Marmonil products, but ensure efficiency for our clients in every process along the value chain, from quarrying to delivery.

Today, as a third generation company with experience in some 70 countries, we are working to become a world leader in natural stone production. Our people and technology are what underpin Marmonil's reputation for superior quality and world-class service. We aspire to be a recognized leader in our industry, delivering excellence every time.

International Group

To better service our current clients and develop new relationships, we have expanded our network to cover six continents through sister companies, strategic partnerships and worldwide agents

Marmonil SPA CARARRA, ITALY

As Marmonil's sister trading office in Italy, Marmonil SPA complements business operations. Established in 1985, the office gave the flagship a foothold from which to sell its products in Europe.

With extensive warehouse facilities and with a 26-year presence, it has developed solid relationships with quarry owners and stone suppliers, ensuring only the best quality stones get procured for the group. In addition to stones, it also procures machinery and consumables whilst remaining updated with the region's technological innovations.

Marmi Natural Stone ATLANTA, USA

Based in Atlanta, Georgia, Marmi Natural Stone is the exclusive source for Marmonil products in the United States and one of the biggest suppliers of quality natural stone in the Southeastern region of the country.

Following the vertically integrated model of its Egyptian sister company, Marmi Natural Stone imports raw materials, designs and manufactures the products and has its own distribution network. The company serves both residential and commercial building industries and has a reputation for delivering top quality and exotic stones.

Marmoles y Piedras Del Nilo SPAIN

Established in 2007, Marmoles y Piedras Del Nilo acts as a trading office in Barcelona for selling Egyptian stones to Spain. It offers consultation to architects, interior designers and well as other technical experts in construction and acts as a knowledge base in giving technical advice for stone use in projects.

Corporate Social Responsibility

Technological innovation and high quality standards are only the beginning: To be a truly successful corporation, we believe that a focus on people and environment is essential. Our company is currently in the process of being designated ISO compliant for Quality (9001), Environmental Responsibility (14001) and Worker Health and Safety (18001).

Our People

With around 800 workers on the production lines, we have stringent safety standards at every level of the production process, while at the same time we to improve the lives of under-privileged Egyptians around the country. We are continuously purchasing and distributing protective clothing to ensure the safe upkeep of our workers. We hire qualified people with talent and passion and try and develop this by providing regular training and support for furthering their academic ambitions.

Our Community

We collaborate on community development projects with a number of organizations including the American Chamber of Commerce, the French Embassy, the Children's Cancer Hospital as well as 6th of October Low Income Housing. Co-opting the philanthropic efforts of other local entrepreneurs, we continuously participate in initiatives that we believe are helping to build a brighter future for under-privileged citizens.



MARMONIL greener rocks

We are aware that making full use of the land's riches can be hard on the environment, and we strive to leave as small a footprint as possible. With stone being the heart of our business for nearly 50 years, we are very wary of trying to minimize waste and trying to optimize the use of every piece of stone.

In quarrying, we completely refrain from using explosives, and invest in the best machinery to extract stones with minimal waste and maximum quarry utilization. This not only prevents unnecessary worker safety hazards and environmental damage, but also minimizes the loss of raw materials.

The concern for reducing waste reverberates throughout the company's chain of production. We seek continuous improvement in trying to reduce our production waste percentages. We actively recycle and re-use stones and tools. Determined to save water, we installed three water recycling plants; 96% of the water used in Marmonil is recycled.

Projects

With experience in some 70 countries, we have built and earned a solid international reputation as a reliable stone supplier for project delivery. We undertake projects ranging from residential to commercial and from public to private, with a portfolio that encompasses:

- Hotels
- Corporate Headquarters
- Residential Complexes
- Commercial Centers
- Airports
- Underground Train Stations
- Museums
- Universities
- Medical Centers
- Highway Infrastructure

Our mass production capacity, ownership of quarries, strong material purchasing power coupled with market knowledge and a strong network marks our strengths as a solid supplier and giving us the ability to handle several mega projects simultaneously and seamlessly with timely delivery. Clients value our experience and expertise, gained by our supply of over 100 projects in the past years.

We have cultivated a great network of clients and we are keen on remaining the partner of choice for local and international developers.

With a production capacity exceeding 2,500,000 m² per year, we strive to be the partner of choice for delivering projects in the 70 countries we supply.

Trump Tower







Korean National Museum
Korea



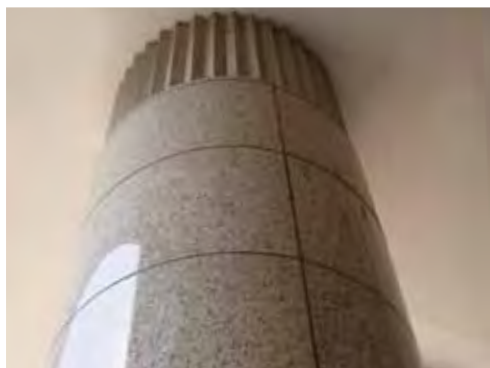
Four Seasons Hotel
Egypt



Shangri-La Hotel
Dubai



Emirates Palace
Abu Dhabi





Grand Hyatt Hotel
Egypt



Galleria Dallas
Texas



Jaz Crystal Resort
Egypt





KPMG Headquarters
Egypt



Four Seasons Hotel
Washington



Omar El Khayam Cruise
Egypt



Travco Headquarters
Egypt



Sahélo Saharienne Bank
Libya



Jaz Oriental Resort
Egypt



J.W. Marriott Hotel
Egypt



Selected Projects

Location	Project Name	Year	Quantity (m ²)	Material Supplied	Application
Hotels					
Panama	Trump Tower	2009	160,000	Marble Tiles	Flooring, Walls
Nevada	Wynn Hotel	2004	47,000	Marble Cut-to-Size	Flooring, Cladding
Egypt	Four Seasons Sharm	2001	60,000	Marble, Granite Tiles & Cut-to-Size	Flooring, Cladding
Italy	Westin Palace	1997		Granite Slabs	Cladding
Egypt	JW Marriott Hotel	2002	15,000	Marble Cut-to-Size	Flooring, Cladding
UAE	Shangri-La Hotel	2003	18,000	Marble Cut-to-Size	Flooring
Egypt	Fairmont Hotel	2006-08	26,000	Marble & Granite Cut-to-Size	Flooring, Cladding
USA	St. Regis Hotel Atlanta	2009		Marble Cut-to-Size	Countertops
Egypt	Four Seasons Nile Plaza	2003	18,000	Granite Cut-to-Size	Cladding, Paving
Kuwait	Hilton Hotel	2001	12,000	Marble Cut-to-Size	Flooring
Egypt	Grand Hyatt Hotel	2000	20,000	Marble & Granite Cut-to-Size	Flooring, Cladding
USA	Four Seasons Hotel Washington	2009	6,350	Marble Tiles	Flooring
Egypt	The Ritz Carlton	1999	20,000	Granite Cut-to-Size	Flooring, Countertops
Egypt	Conrad Hotel	1998	30,000	Marble & Granite Cut-to-Size	Flooring, Cladding,
USA	Rosewood Sandhill	2008	3,500	Marble Tiles	Flooring
Egypt	Soma Bay Cascades	2004	25,000	Marble & Granite Cut-to-Size	Flooring, Cladding
USA	Pelican Hill Resort	2009			
Egypt	Semiramis Intercontinental Hotel	1997		Granite Slabs & Cut-to-Size	Flooring, Cladding

Location	Project Name	Year	Quantity (m ²)	Material Supplied	Application
Residential					
Puerto Rico	Residential Complex	2007	40,000	Marble Tiles	Flooring
UAE	The Palm Islands	2006	40,000	Marble Tiles	Flooring
UAE	Jumeirah Island	2005	60,000	Marble Tiles	Flooring
Nevada	Turnberry Towers Condos	2005	15,000	Marble Cut-to-Size	Flooring
USA	Aqualine High Rise Condo	2003	12,500	Marble Cut-to-Size	Flooring
KSA	Private Palace Saudi Arabia	2002	3,000	Marble curved	Cladding
Mexico	Residential Complex	2006	4,000	Marble Cut-to-Size	Flooring
Mexico	Residential Complex	2007	15,000	Marble Tiles	Flooring
Egypt	Pyramids Heights	2005	27,000	Granite Cut-to-Size	Flooring, Cladding
UAE	Bukhater Building	2000	16,000	Granite Cut-to-Size	Cladding

Corporate Headquarters					
Egypt	Travco Headquarters	2006	6,000	Marble & Granite Cut-to-Size	Flooring, Cladding
Egypt	Bank Misr	1997	15,000	Granite Cut-to-Size	Cladding
Egypt	Raya Headquarters	2006	7,000	Granite Cut-to-Size	Flooring, Cladding
Libya	Sahélo Saharienne Bank	2006	14,000	Granite Cut-to-Size	Flooring, Cladding
Poland	Head Office Building	2006	6,000	Marble Cut-to-Size	Flooring
Romania	Head Office Building	2006	4,000	Granite Cut-to-Size	Flooring
Egypt	IBM Headquarters	2004	4,000	Granite Cut-to-Size	Flooring, Cladding
Egypt	Smart Village	2003	6,000	Granite Tiles & Cut-to-Size	Flooring
Egypt	Nile City Complex	2003	10,000	Marble & Granite Cut-to-Size	Flooring, Cladding
Egypt	KPMG Headquarters	2003	4,000	Granite Cut-to-Size	Flooring, Cladding
Egypt	XEROX	2002	4,000	Granite Cut-to-Size	Flooring, Cladding

Location	Project Name	Year	Quantity (m ²)	Material Supplied	Application
Governmental & Public					
Egypt	Borg El Arab Airport	2008	30,000	Marble & Granite Cut-to-Size	Flooring, Cladding
Egypt	Cairo Airport Terminal III	2007	40,000	Marble, Granite Tiles & Cut-to-Size	Flooring
Egypt	Air Force Celebration Hall	1999	6,000	Marble & Granite Cut-to-Size	Flooring, Cladding
Egypt	Cairo Underground Metro	1999	15,000	Granite Cut-to-Size	Flooring, Cladding
Egypt	Cairo Underground Metro	1997		Granite Cut-to-Size	Flooring
Egypt	Underground Metro Line #1	1997		Granite Slabs	Flooring
Korea	National Museum	2003	12,000	Marble Cut-to-Size	Flooring
UAE	General Military HQ	2001	8,000	Granite Slabs	
Egypt	Cairo Underground Metro	1998	10,000	Granite Cut-to-Size	Flooring
USA	Loyola Medical Center	2009			
Egypt	Al-Azhar Park	2005		Massive Columns & Fountains	Landscape Items
Egypt	Post Office	2011	25,000	Marble & Granite Cut-to-Size	Flooring, Cladding
Egypt	Cairo Airport - Pilgrimage Terminal	2011	5,000	Granite Tiles	Paving
Egypt	Cairo Underground Metro - Phase III	2010	7,500	Granite Tiles, Cut-to-Size	Flooring, Walls

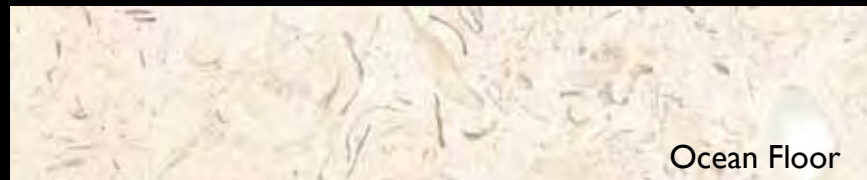
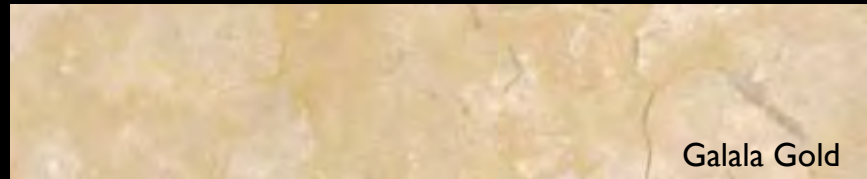
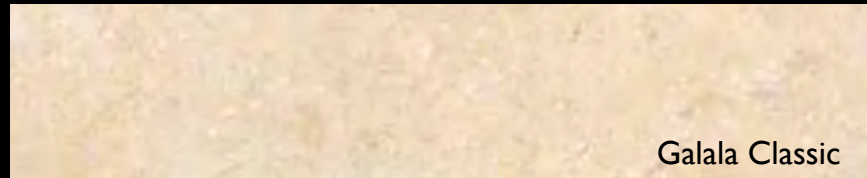
Location	Project Name	Year	Quantity (m ²)	Material Supplied	Application
Academia					
KSA	King Abdalla University Science & Technology	2008	44,000	Marble Cut-to-Size	Facades Cladding
Egypt	MSA University	2007	54,000	Granite Tiles & Cut-to-Size	Flooring
Egypt	AUC New Campus	2007	30,000	Marble & Granite Cut-to-Size	Flooring, Cladding
Embassies					
Latvia	US Embassy	2009	6,000	Marble Cut-to-Size	Facades Cladding
Malta	US Embassy	2009	4,000	Marble & Granite Cut-to-Size	Facades Cladding
Egypt	Dutch Embassy	2002	1,500	Marble Cut-to-Size	Flooring, Cladding
Romania	US Embassy	2010	1,000	Granite Cut-to-Size	Cladding
Egypt	Saudi Embassy	2010	3,000	Marble Cut-to-Size	Flooring, Walls
Commercial					
USA	Oaks Mall	2008	14,000	Marble Tiles	Flooring
Egypt	El-Obour Mall	1997		Granite Slabs	
Egypt	Maadi Grand Mall	1997		Granite Slabs	
USA	Galleria Dallas - Texas	2004	15,000	Marble Cut-to-Size	Flooring

Egyptian Collection





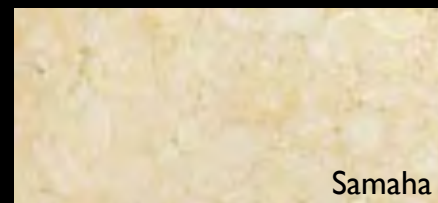
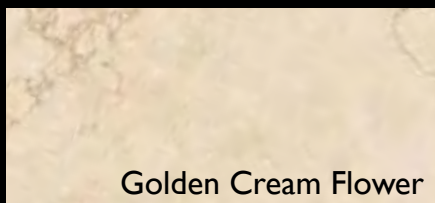
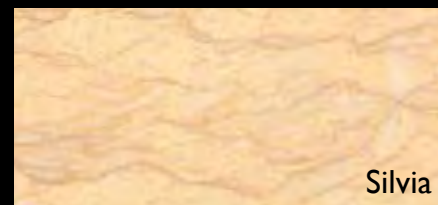
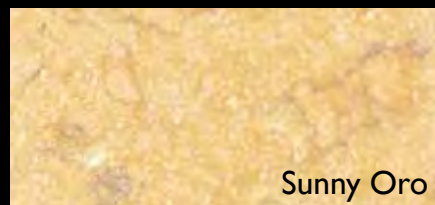
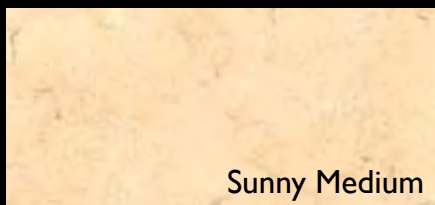
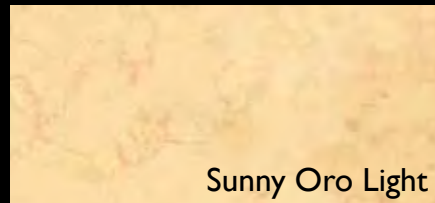
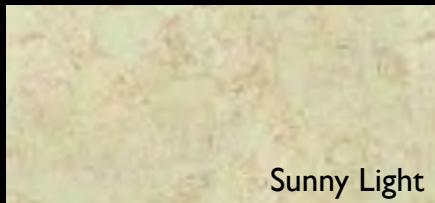
Galala Family

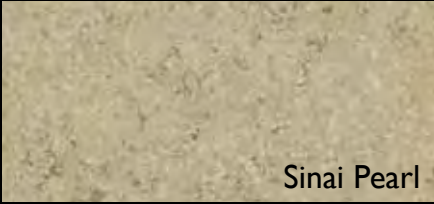




Galala Extra

EGYPTIAN MARBLE





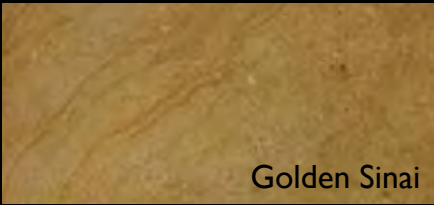
Sinai Pearl



Breccia Sinai



Tropical Rose



Golden Sinai



Imperial Grey



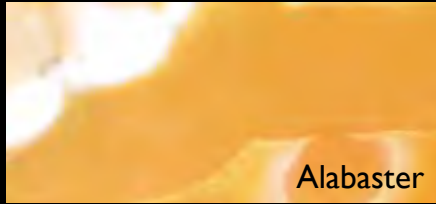
Breccia Fawakhir



Goldi



Imperial Grey Dark



Alabaster

EGYPTIAN GRANITE



Ghazal Dark



Ghazal Light



Hoody Light



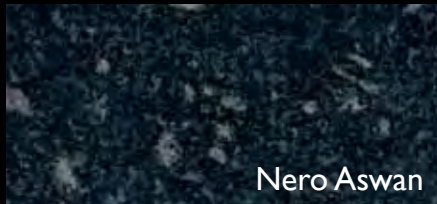
Karnak Grey



White Safaga



Bianco Halayeb




Nero Aswan




Charme




Ghindone Aswan




Hoody Dark



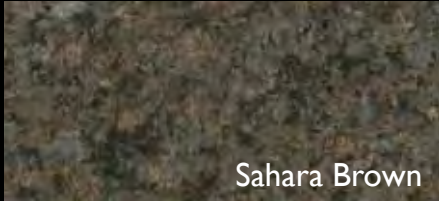
Red Aswan Dark




Rosa Royal




Imperial Rose




Sahara Brown



Rosa Alnasr

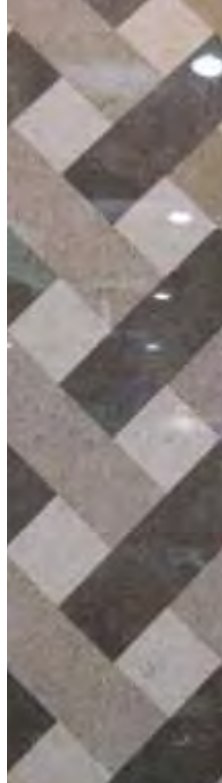


Rosa Marwa



Rosa Sinai

Finishes



Polished



Tumbled



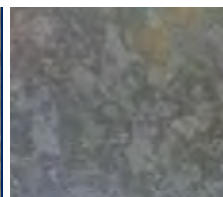
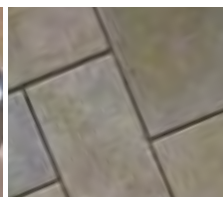
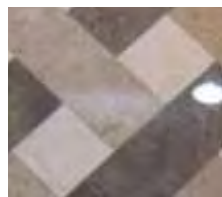
Brushed



Leather



Acid Washed





Flamed



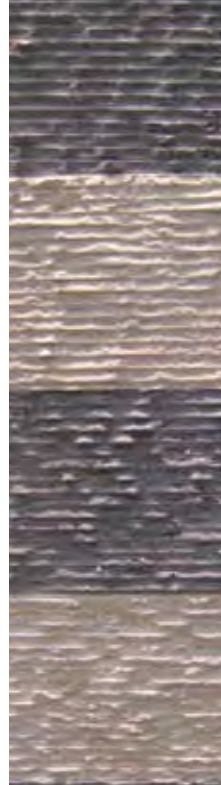
Sandblasted



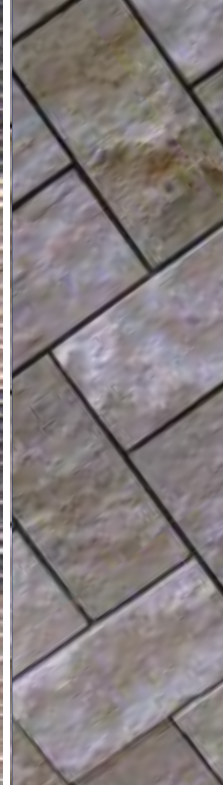
Bush
hammered



Multi-Line



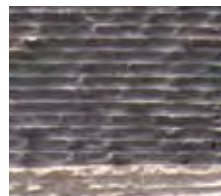
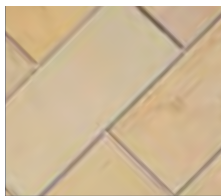
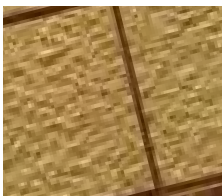
Multi-Split



Split Face



Chiseled Edge



Patterns





Our Quarries

In our commitment to deliver the highest quality stones, we license 50 quarries in Egypt covering 12 types of granite and 6 types of marble. With these exceptionally strong resources, we established Marmonil Quarrying in 2009 run and control the earlier phases our vertical integration in stone extraction. This investment assures our capacity to deliver premium quality stones in large volumes with color consistency. Our teams are always on the search for exploring new materials for our clients.

We pride ourselves in being the country's biggest and greenest producer of raw stone, using only sophisticated technology. We consult with expert geologists and conduct quarry planning to ensure that our extraction is done in a manner that is both cost-efficient and environmentally friendly.







Production



Slab Production

For slabs polishing, we have invested in two complete lines for granite and two for marble. To guarantee premium quality, we procure the highest quality resins from our suppliers including epoxy, polyester and UV resins as well as an “Anti-salt” treatment to counter the salt emissions of some stones. With our experience, we have the know-how of resin application and all due diligence necessary to ensure our clients get the highest quality slabs.







Gangsaws

To saw blocks into slabs, we have 10 granite gangsaws from Gaspari Menotti and 6 marble gangsaws, four of which are Gaspari Menotti and two Alpe

Multi-Wire & Diamond Wires

We have invested in the Bidese multi-wire machine which uses its 58 diamond wires to saw granite blocks in only a few hours. Our other 11 diamond wires, the majority of which are Pellegrini, are used for squaring blocks



Slabs Polishing Line

We have 4 complete slab polishing lines; two for granite and two for marble. Our granite lines come from Gaspari and Breton, whereas our marble line is from Gaspari

Treatments

Our machines are equipped to apply all kinds of resins including Epoxy, Polyester and UV. Following resin application, our edge is the Anti-Salt treatment we can provide on materials to prevent salt emissions in the last production stage before packing

Container Loading

Each crate and bundle must be inspected and pass quality benchmarks before any material can be loaded in it. Slabs can either be loaded into wooden bundles or lashed on steel A-frames depending on customer preferences

Tile Production

With an array of the latest technology and highest quality chemicals, we produce premium quality tiles ready for installation. With two complete lines for tile processing, fully automated epoxy resin ovens and UV furnaces, we guarantee tile quality in squareness, flatness and thickness tolerances. Post production, we separate tiles according to their colors and conduct a crate-by-crate packing.







Block Cutters

We have invested in 13 block cutters, 10 of which are Gaspari Menotti. We have allocated 9 block cutters for marble and 4 for granite

Tile Lines

With 2 complete lines for tile processing, we are able to expand and maintain a high quality in production thanks to lines encompassing: thickness calibration, UV Resin furnace, polishing, cross cutting, side calibration, chamfering and undercut



Epoxy Oven

Epoxy resin application is fully automated and mass produced in our tile lines to ensure proper treatment and to guarantee a dependable, consistent high end product

Color Selection

Conducted over two phases: firstly when assigning blocks to orders, we select similar colors and textures; secondly, after production we do color selection during the packing of the crates to ensure full area color consistency, crate by crate

Packing

Tiles are packed uniformly in wooden crates. For 1 cm thickness, tiles are packed into styrofoam boxes then loaded into crates. The tiles are wrapped in plastic sheets and placed with the polished sides facing each other to protect against scratching

Cut to Size Production

Our wide range of machinery cover all architectural elements in any size, shape or edge profile. Our strength lies not only in the attention to detail in our tailored sizes, but in our ability to mass produce cut-to-size stone.







Waterjet

Our 2 Flow waterjet machines are able to execute the most intricate of shapes in the utmost precision

CNC

We operate 2 CNC machines. Our 5-axis machine by Brembana is used for contouring, milling and carving. Our Lathe machine by Prusiani is used for columns with a size ranging to 360x120 cm



Edge Profiling

We operate our Montresor 19-head machine that can profile 23 different edge shapes of thickness up to 12 cm in marble or granite

Bridge Cutters

With 7 bridge cutters, we are able to expedite order production in converting slabs to cut-to-size

Profiling Diamond Wire

This machine cuts blocks into different shapes and curves with its two-dimensional system



Quality Control

Our focus on quality remains uncompromised with quality assurance and quality control conducted at every phase of the value chain.

Quarrying

- Cut & discard quarrying to minimize waste
- Block group according to physical characteristics, quarry layer and color

Fabrication

- Block Squaring
- Thickness Control
- Flatness Control
- Visual Inspection
- Tolerances Measurement

Maintenance

- Weekly preventative maintenance
- 15 engineers and 50 workers dedicated to daily maintenance
- Annual closing for two weeks to conduct comprehensive maintenance

Loading

- Cranes used to lift packed stones
- Container fumigation





Treatment

- Anti-salt Treatment
- Resins: Epoxy, Polyester & UV
- Repair of fractures
- Drying conducted by elevator ovens

Finishing

- Measuring of degree of polish
- Checking uniformity of finish application
- Ensuring uniform texture

Packing

- Tiles: wrapped in plastic sheets packed in wooden crates
- Slabs: automatic plastic separator - packed in wooden bundles or A-steel frames

Color Selection

- Match according to Color Guide
- Zone by Zone selection



MARMONIL
MARBLE & GRANITE

56 Imtedad Ramses st,
Nasr City, Cairo, Egypt
Tel +202 24013920
Fax +202 24013925
export@marmonil.com
www.marmonil.com

MARMONIL^{SPA}

Via Caboto n.7
54036 Marina di Carrara, Italy
Tel +39 0585 631340
Fax +39 0585 634770
marmonil@bicnet.it



5433 Goshen Strings Road
Norcross, GA 30093, USA
Tel +1 770 921 5798
Fax +1 770921 6611
info@marmistone.com
www.marmistone.com

www.marmonil.com

